

K16按钮开关及指示灯



Pushbutton & Indicator

产品特性/ Features

安装直径/Installation diameter: 16mm
 防护等级/Degree of Protection: IP65
 触点银镀金/Silver Plated of contact: 3μ
 紧凑型设计/Compact design saves space
 灯罩防紫外线/Shade UV
 LED超高亮冷光源灯显示
 Super bright LED cold light source lamp display

相关认证/ Related certification

标准/Standard	认证标志/signal	认证机构/Agency certification
UL508 CSA C22.2 No.14		UL Recognized File No.E307512
GB14048.5		自我声明(认证机构CQC) Self declaration(Certification body CQC) 编号:2020970305000821
EN60947-5-1 EN60947-5-5(注)		自我声明(根据欧洲低电压指令) Self-declaration(According to the European Low Voltage Directive)



产品规格/ Specifications

防护等级 Waterproof grade	选择IP40, 钥匙IP20, 其它IP65 Select IP40, key IP20, others IP65
触点类型 Contact Configuration	单刀、双刀 SPDT, DPDT
最大电压 Maximum Voltage	250V AC/DC
热电流 Thermal Current	5A
最小负载 Minimum Applicable Load	5V AC/DC, 1mA
触点材料 Contact Material	银合金 (镀金) Silver alloy (gold plated)
端子接式 Terminal Style	110端子型翼片 110 terminal type tab
工作温度 Operating Temperature	-25°C to +60°C
工作湿度 Operating Humidity	45 to 85% RH
接触电阻 Contact Resistance	50mΩ maximum

电气寿命 Electrical Life	100,000 次操作 100,000 Operations minimum
机械寿命 Mechanical Life	Maintained: 100,000 Momentary: 1,000,000 Selecotr /Keylock: 250, 000 (operations minimum) 自锁: 100,000 自复: 1,000,000 选择/钥匙: 250, 000 (最少操作)
工频耐压 Dielectric Strength	1500VAC 1min
绝缘电阻 Insulation Resistance	最小 100MΩ (500V DC 兆欧表) 100MΩ minimum (500V DC megger)
抗振性 Vibration Resistance	10 至 55Hz, 幅度 1.2mm 10 to 55Hz, amplitude 1.2mm p-p
保护等级 Degree of Protection	>10G

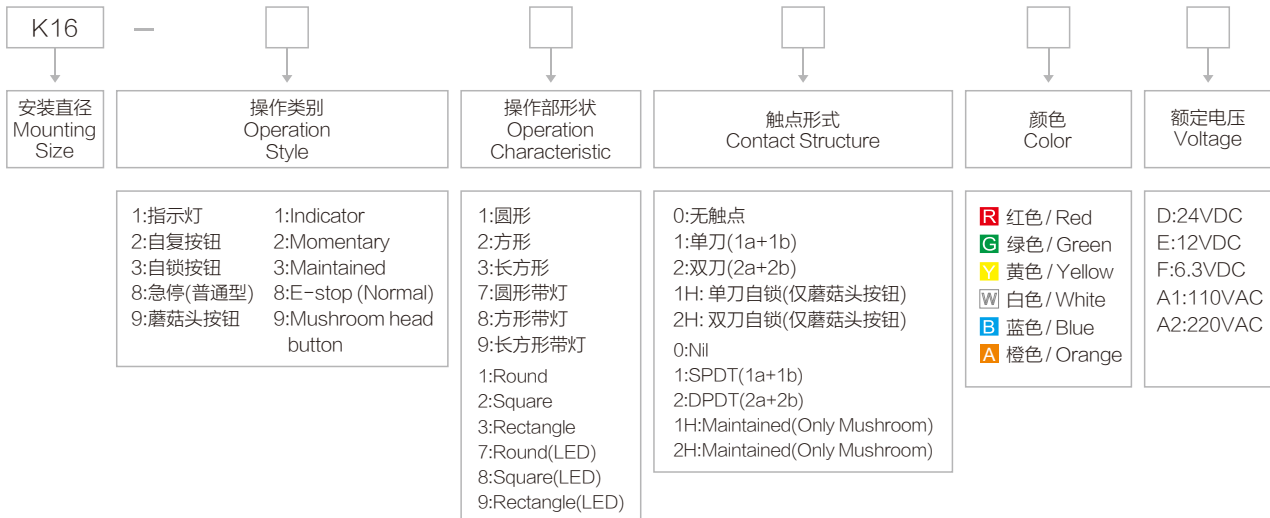
LED灯珠参数/ LED Ratings

灯珠电压 Bead Voltage	电流/Current
3V DC	8mA
6-48V AC/DC	7-10mA
110-220V AC	2-3mA

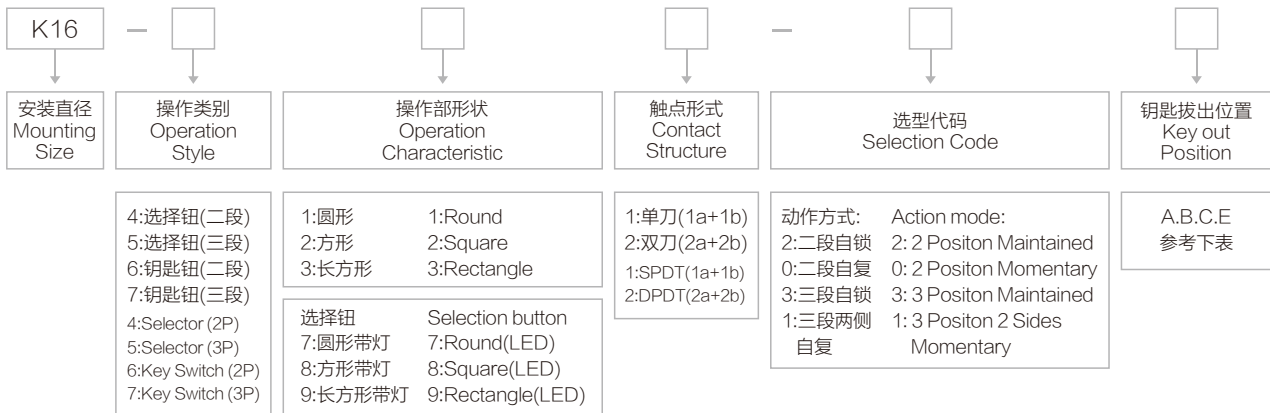
触点参数/ Contact Ratings (AC-15 DC-13)

工作电压/Working voltage		24V	110V	220V
AC (50/60Hz)	阻性 Resistive	—	1.0A	0.5A
	感性 Inductive	—	0.7A	0.5A
DC	阻性 Resistive	1.0A	0.2A	—
	感性 Inductive	0.7A	0.1A	—

按钮开关型号命名/ Pushbutton Select Code



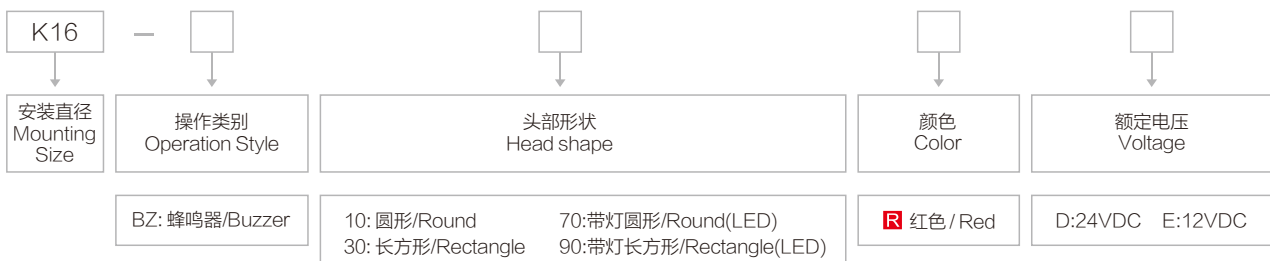
选择和钥匙开关命名方式/ Selector and Key Switch Select Code



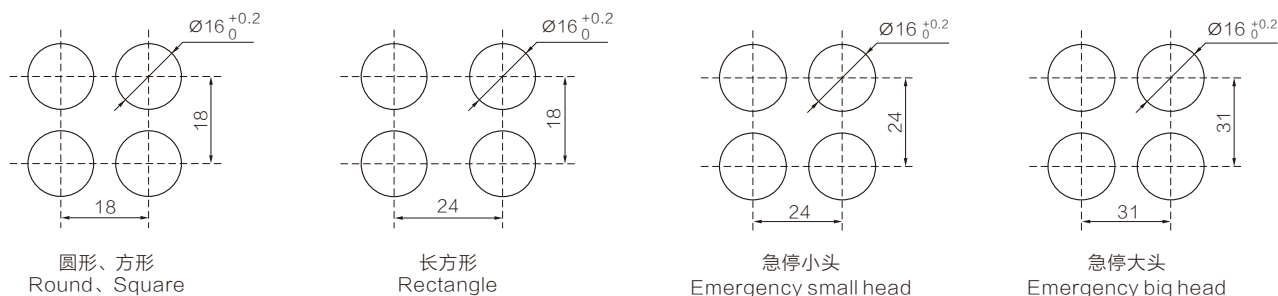
区分/Sort	复位方式/Reset Style		钥匙拔出位置/Key out Positon			
	自锁/Maintained	自复/Momentary				
2段/2Positon						
代号/Code	2	0	A	B		
3段/3Positon						
代号/Code	3	1			C	E

选择/钥匙旋转角度是90° Selection/key rotation angle is 90°

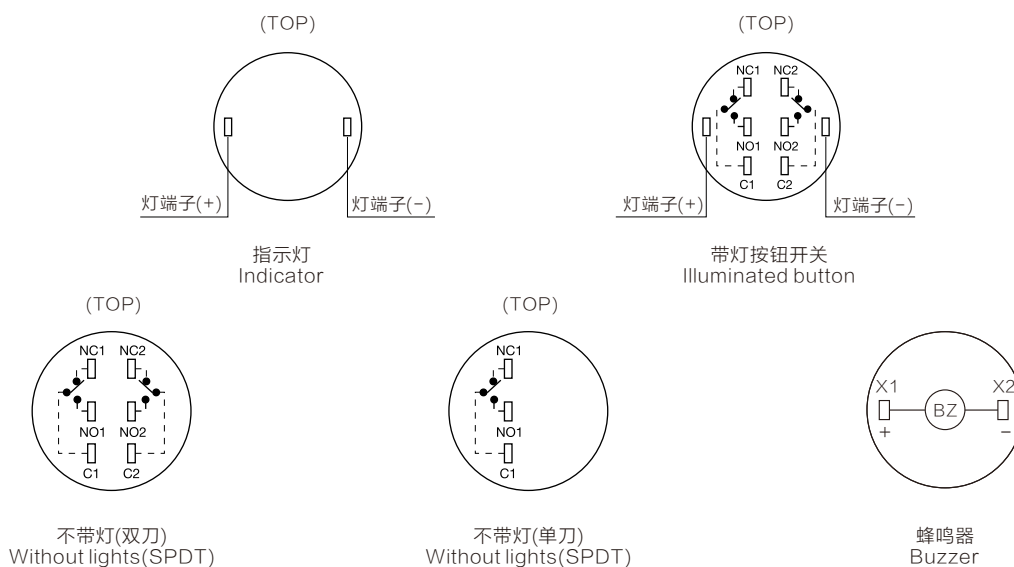
蜂鸣器命名方式/ Buzzer Select Code



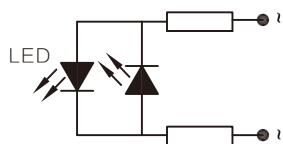
安装尺寸图/ Installation size



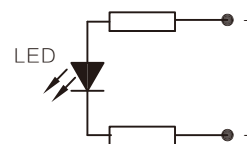
端子排列图/ Terminal style



灯珠电路图/ LED Circuit



适用交流:6.3VAC, 12VAC, 24VAC, 48VAC, 110VAC, 220VAC
For 6.3VAC, 12VAC, 24VAC, 48VAC, 110VAC, 220VAC



适用直流:6.3VDC, 12VDC, 24VDC
For 6.3VDC, 12VDC, 24VDC

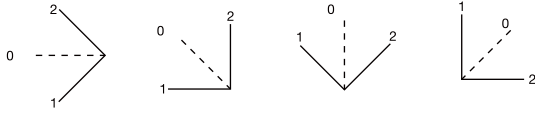
选择钮， 钥匙钮手柄位置/ Selector and Key Switch Handle Position

操作位规格 Operation		触点 Contact
90° 2位 2 Position	 自锁/Maintained	单刀 SPDT
	 自复/Momentary	双刀 DPDT

改变选择位/ Change selection bit

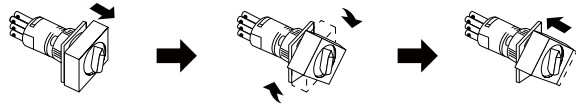
通过旋转独特的锁定结构法兰盘即可改变选择位。且，法兰盘具备每旋转45°即可固定的锁定功能，所以法兰盘无旋转偏移，面板安装容易。

【3位选择形状例】



出厂时的选择位位置

选择角的位置变更方法

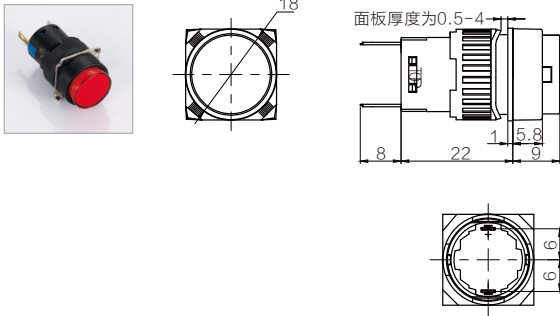


首先将法兰盘用力拉出解除锁定，即可旋转法兰盘。选择角的位置在任意45°的位置上按下即可进行锁定。

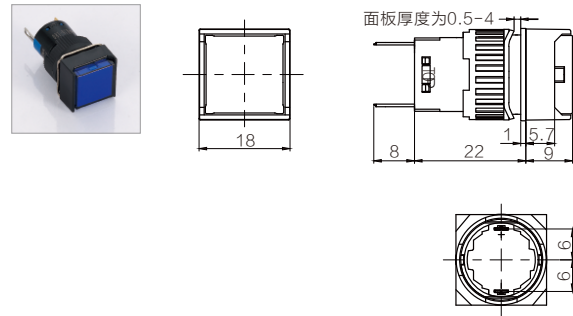
K16指示灯系列/ K16 Indicator Series

名称/外观 Product appearance	灯罩颜色 Top Color	额定电压 Rated Voltage
圆形/Round K16-170 □●	请下列颜色编码 替换型号中的"□"	请下列颜色编码 替换型号中的"●"
	R 红色/Red G 绿色/Green Y 黄色/Yellow W 白色/White B 蓝色/Blue A 橙色/Orange	D:24VDC E:12VDC F:6.3VDC A1:110VAC A2:220VAC
方形/Square K16-180 □●		
		
长方形/Rectangle K16-190 □●		
		

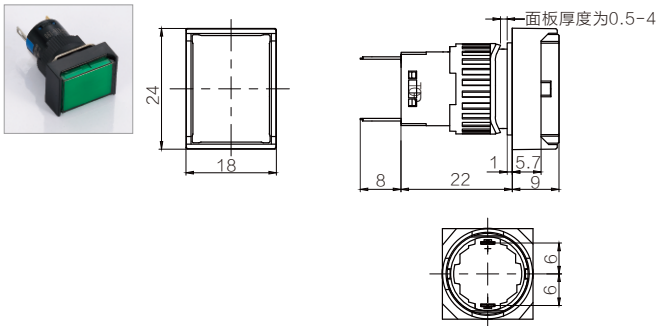
圆形指示灯



方形指示灯



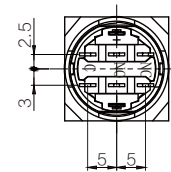
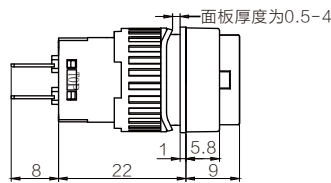
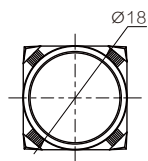
长方形指示灯



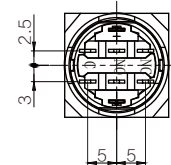
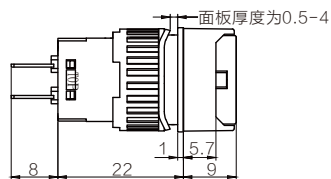
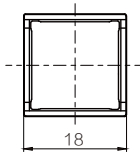
K16按钮系列/ K16 Push Button

名称/外观 Product appearance	操作类别 Operation	带灯形式 Illuminated type	触点 Contact	产品型号 Model	灯罩颜色 Top Color	额定电压 Rated Voltage
圆形 / Round 	自复 Momentary	不带灯 Without LED	单刀/SPDT	K16-211□●	请用下列颜色编码 替换型号中的"□" R 红色/Red G 绿色/Green Y 黄色/Yellow W 白色/White B 蓝色/Blue A 橙色/Orange	请用下列颜色编码 替换型号中的"●" D:24VDC E:12VDC F:6.3VDC A1:110VAC A2:220VAC
			双刀/DPDT	K16-212□●		
		带灯 With LED	单刀/SPDT	K16-271□●		
			双刀/DPDT	K16-272□●		
	自锁 Maintained	不带灯 Without LED	单刀/SPDT	K16-311□●		
			双刀/DPDT	K16-312□●		
带灯 With LED	单刀/SPDT	K16-371□●				
双刀/DPDT	K16-372□●					
方形 / Square 	自复 Momentary	不带灯 Without LED	单刀/SPDT	K16-221□●	请用下列颜色编码 替换型号中的"□" R 红色/Red G 绿色/Green Y 黄色/Yellow W 白色/White B 蓝色/Blue A 橙色/Orange	请用下列颜色编码 替换型号中的"●" D:24VDC E:12VDC F:6.3VDC A1:110VAC A2:220VAC
			双刀/DPDT	K16-222□●		
		带灯 With LED	单刀/SPDT	K16-281□●		
			双刀/DPDT	K16-282□●		
	自锁 Maintained	不带灯 Without LED	单刀/SPDT	K16-321□●		
			双刀/DPDT	K16-322□●		
带灯 With LED	单刀/SPDT	K16-381□●				
双刀/DPDT	K16-382□●					
长方形 / Rectangle 	自复 Momentary	不带灯 Without LED	单刀/SPDT	K16-231□●	请用下列颜色编码 替换型号中的"□" R 红色/Red G 绿色/Green Y 黄色/Yellow W 白色/White B 蓝色/Blue A 橙色/Orange	请用下列颜色编码 替换型号中的"●" D:24VDC E:12VDC F:6.3VDC A1:110VAC A2:220VAC
			双刀/DPDT	K16-232□●		
		带灯 With LED	单刀/SPDT	K16-291□●		
			双刀/DPDT	K16-292□●		
	自锁 Maintained	不带灯 Without LED	单刀/SPDT	K16-331□●		
			双刀/DPDT	K16-332□●		
带灯 With LED	单刀/SPDT	K16-391□●				
双刀/DPDT	K16-392□●					

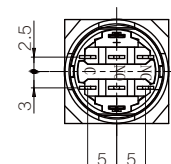
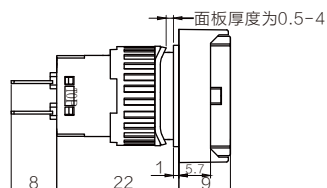
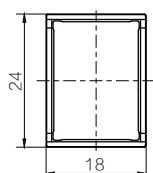
圆形按钮



方形按钮



长方形按钮

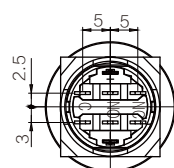
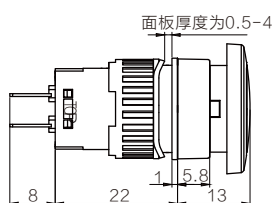
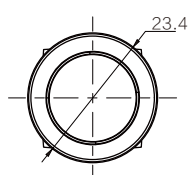


K16蘑菇头按钮系列/ K16 Mushroom Head Button

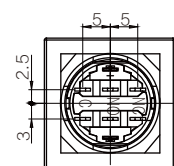
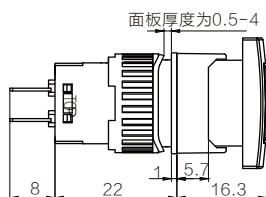
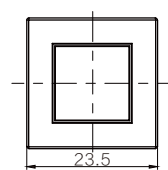
K16 按钮开关及指示灯

名称/外观 Product appearance	操作类别 Operation	带灯形式 Illuminated type	触点 Contact	产品型号 Model	灯罩颜色 Top Color	额定电压 Rated Voltage
圆形 / Round 	自复 Momentary	不带灯 Without LED	单刀/SPDT	K16-911 □●	请用下列颜色编码 替换型号中的"□" R 红色/Red G 绿色/Green Y 黄色/Yellow W 白色/White B 蓝色/Blue	请用下列颜色编码 替换型号中的"●" D:24VDC E:12VDC F:6.3VDC A1:110VAC A2:220VAC
			双刀/DPDT	K16-912 □●		
		带灯 With LED	单刀/SPDT	K16-971 □●		
			双刀/DPDT	K16-972 □●		
	自锁 Maintained	不带灯 Without LED	单刀/SPDT	K16-911H□●		
			双刀/DPDT	K16-912H□●		
		带灯 With LED	单刀/SPDT	K16-971H□●		
			双刀/DPDT	K16-972H□●		
方形 / Square 	自复 Momentary	不带灯 Without LED	单刀/SPDT	K16-921 □●	请用下列颜色编码 替换型号中的"□" R 红色/Red G 绿色/Green Y 黄色/Yellow W 白色/White B 蓝色/Blue	请用下列颜色编码 替换型号中的"●" D:24VDC E:12VDC F:6.3VDC A1:110VAC A2:220VAC
			双刀/DPDT	K16-922 □●		
		带灯 With LED	单刀/SPDT	K16-981 □●		
			双刀/DPDT	K16-982 □●		
	自锁 Maintained	不带灯 Without LED	单刀/SPDT	K16-921H□●		
			双刀/DPDT	K16-922H□●		
		带灯 With LED	单刀/SPDT	K16-981H□●		
			双刀/DPDT	K16-982H□●		
长方形 / Rectangle 	自复 Momentary	不带灯 Without LED	单刀/SPDT	K16-931 □●	请用下列颜色编码 替换型号中的"□" R 红色/Red G 绿色/Green Y 黄色/Yellow W 白色/White B 蓝色/Blue	请用下列颜色编码 替换型号中的"●" D:24VDC E:12VDC F:6.3VDC A1:110VAC A2:220VAC
			双刀/DPDT	K16-932 □●		
		带灯 With LED	单刀/SPDT	K16-991 □●		
			双刀/DPDT	K16-992 □●		
	自锁 Maintained	不带灯 Without LED	单刀/SPDT	K16-931H□●		
			双刀/DPDT	K16-932H□●		
		带灯 With LED	单刀/SPDT	K16-991H□●		
			双刀/DPDT	K16-992H□●		

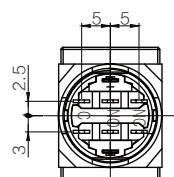
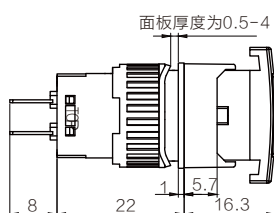
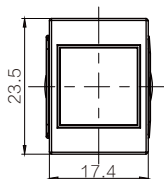
圆形按钮



方形按钮



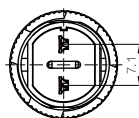
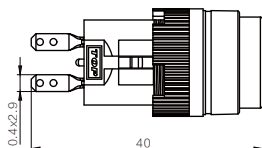
长方形按钮



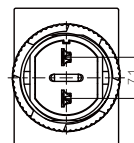
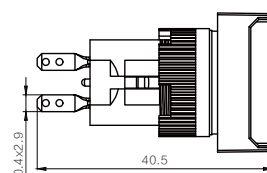
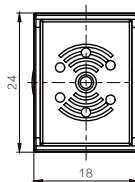
K16蜂鸣器系列/ K16 Buzzer

名称/外观 Product appearance	带灯形式 Illuminated type	产品型号 Model
圆形 / Round 	不带灯 Without LED	K16-BZ10D
		K16-BZ10E
	带灯 With LED	K16-BZ70D
		K16-BZ70E
长方形 / Rectangle 	不带灯 Without LED	K16-BZ30D
		K16-BZ30E
	带灯 With LED	K16-BZ90D
		K16-BZ90E

圆形蜂鸣器



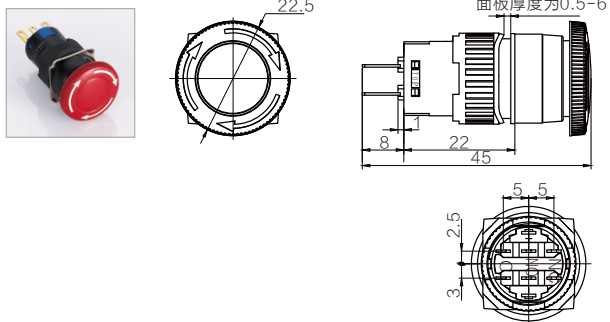
长方形蜂鸣器



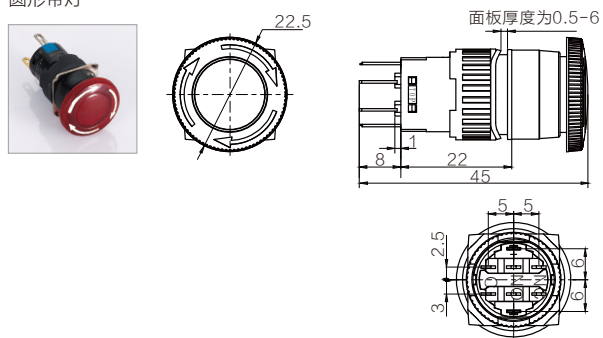
K16系列急停按钮/ K16 E-stop button series

名称/外观 Product appearance	触点 Contact	产品型号 Model
圆形 / Round 	单刀SPDT	K16-811
	双刀DPDT	K16-812
圆形带灯 / Round with light 	单刀SPDT	K16-871
	双刀DPDT	K16-872
圆形(大头) / Round(Big head) 	单刀SPDT	K16-811-N
	双刀DPDT	K16-812-N

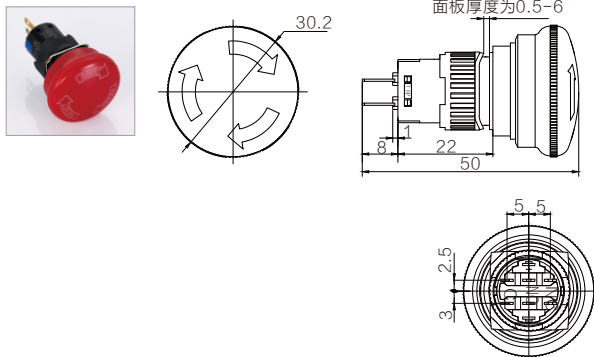
圆形
























圆形带灯



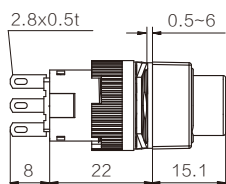
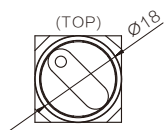
圆形(大头)



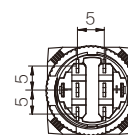
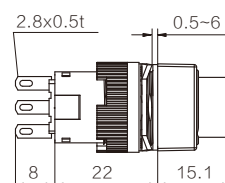
K16选择钮系列/ K16 Selector button

名称/外观 Product appearance	操作位规格 Operation		触点 Contact	产品型号 Model	
圆形 / Round 	90° 2位 2 Position	L 	自锁/Maintained	单刀/SPDT	K16-4112
		L  R	自复/Momentary	单刀/SPDT	K16-4110
		L  R	自锁/Maintained	双刀/DPDT	K16-4122
		L  R	自复/Momentary	双刀/DPDT	K16-4120
	90° 3位 3 Position	L  R	自锁/Maintained	双刀/DPDT	K16-5123
		L  R	自复/Momentary	双刀/DPDT	K16-5121
方形 / Square 	90° 2位 2 Position	L 	自锁/Maintained	单刀/SPDT	K16-4212
		L  R	自复/Momentary	单刀/SPDT	K16-4210
		L  R	自锁/Maintained	双刀/DPDT	K16-4222
		L  R	自复/Momentary	双刀/DPDT	K16-4220
	90° 3位 3 Position	L  R	自锁/Maintained	双刀/DPDT	K16-5223
		L  R	自复/Momentary	双刀/DPDT	K16-5221
长方形 / Rectangle 	90° 2位 2 Position	L 	自锁/Maintained	单刀/SPDT	K16-4312
		L  R	自复/Momentary	单刀/SPDT	K16-4310
		L  R	自锁/Maintained	双刀/DPDT	K16-4322
		L  R	自复/Momentary	双刀/DPDT	K16-4320
	90° 3位 3 Position	L  R	自锁/Maintained	双刀/DPDT	K16-5323
		L  R	自复/Momentary	双刀/DPDT	K16-5321

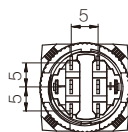
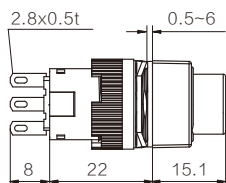
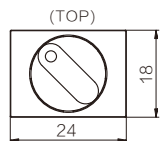
圆形选择钮



方形选择钮



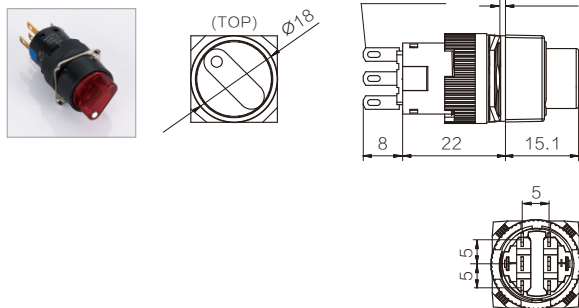
长方形选择钮



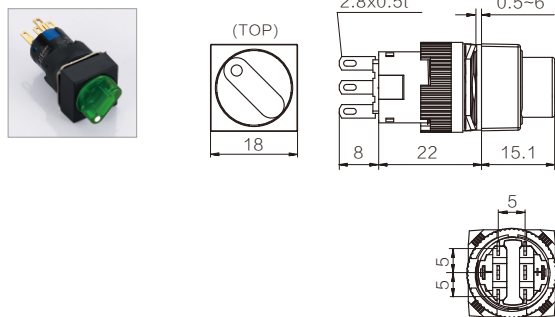
K16带灯选择钮系列/ K16 Selector button

名称/外观 Product appearance	操作位规格 Operation		触点 Contact	产品型号 Model	灯罩颜色 Top Color	额定电压 Rated Voltage
圆形 / Round 	90° 2位 2 Postion	L  R	自锁/Maintained	单刀/SPDT	K16-4712 □ ●	请用下列颜色编码 替换型号中的"□" ● R 红色/Red G 绿色/Green Y 黄色/Yellow W 白色/White B 蓝色/Blue 请用下列颜色编码 替换型号中的"●" D:24VDC E:12VDC F:6.3VDC A1:110VAC A2:220VAC
		L  R	自复/Momentary	单刀/SPDT	K16-4710 □ ●	
		L  R	自锁/Maintained	双刀/DPDT	K16-4722 □ ●	
		L  R	自复/Momentary	双刀/DPDT	K16-4720 □ ●	
	90° 3位 3 Postion	L  R	自锁/Maintained	双刀/DPDT	K16-5723 □ ●	
		L  R	自复/Momentary	双刀/DPDT	K16-5721 □ ●	
方形 / Square 	90° 2位 2 Postion	L  R	自锁/Maintained	单刀/SPDT	K16-4812 □ ●	
		L  R	自复/Momentary	单刀/SPDT	K16-4810 □ ●	
		L  R	自锁/Maintained	双刀/DPDT	K16-4822 □ ●	
		L  R	自复/Momentary	双刀/DPDT	K16-4820 □ ●	
	90° 3位 3 Postion	L  R	自锁/Maintained	双刀/DPDT	K16-5823 □ ●	
		L  R	自复/Momentary	双刀/DPDT	K16-5821 □ ●	
长方形 / Rectangle 	90° 2位 2 Postion	L  R	自锁/Maintained	单刀/SPDT	K16-4912 □ ●	
		L  R	自复/Momentary	单刀/SPDT	K16-4910 □ ●	
		L  R	自锁/Maintained	双刀/DPDT	K16-4922 □ ●	
		L  R	自复/Momentary	双刀/DPDT	K16-4920 □ ●	
	90° 3位 3 Postion	L  R	自锁/Maintained	双刀/DPDT	K16-5923 □ ●	
		L  R	自复/Momentary	双刀/DPDT	K16-5921 □ ●	

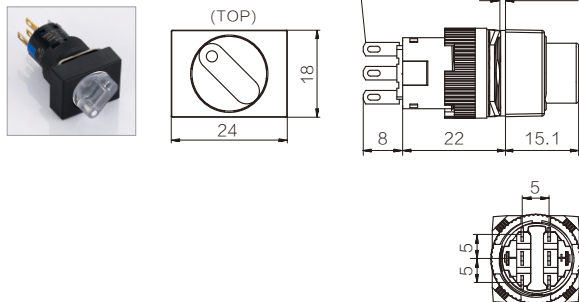
圆形选择钮










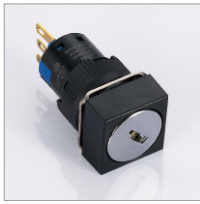













方形选择钮



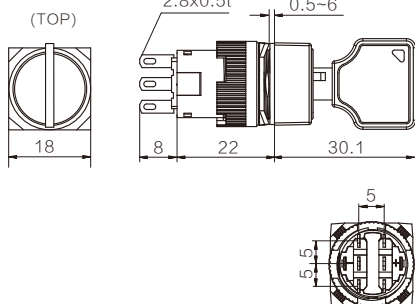
长方形选择钮



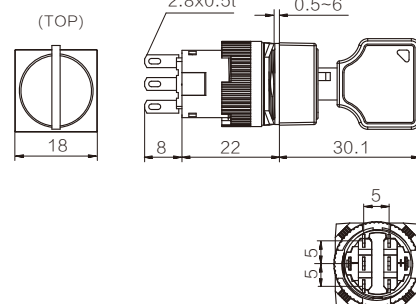
K16钥匙钮开关/ K16 Key switch Button

名称/外观 Product appearance	操作位规格 Operation		触点 Contact	产品型号 Model	
圆形 / Round 	90° 2位 2 Postion	L 	自锁/Maintained	单刀/SPDT	K16-6112
		L  R	自复/Momentary	单刀/SPDT	K16-6110
		L  R	自锁/Maintained	双刀/DPDT	K16-6122
		L  R	自复/Momentary	双刀/DPDT	K16-6120
	90° 3位 3 Postion	L  R	自锁/Maintained	双刀/DPDT	K16-7123
		L  R	自复/Momentary	双刀/DPDT	K16-7121
方形 / Square 	90° 2位 2 Postion	L 	自锁/Maintained	单刀/SPDT	K16-6212
		L  R	自复/Momentary	单刀/SPDT	K16-6210
		L  R	自锁/Maintained	双刀/DPDT	K16-6222
		L  R	自复/Momentary	双刀/DPDT	K16-6220
	90° 3位 3 Postion	L  R	自锁/Maintained	双刀/DPDT	K16-7223
		L  R	自复/Momentary	双刀/DPDT	K16-7221
长方形 / Rectangle 	90° 2位 2 Postion	L 	自锁/Maintained	单刀/SPDT	K16-6312
		L  R	自复/Momentary	单刀/SPDT	K16-6310
		L  R	自锁/Maintained	双刀/DPDT	K16-6322
		L  R	自复/Momentary	双刀/DPDT	K16-6320
	90° 3位 3 Postion	L  R	自锁/Maintained	双刀/DPDT	K16-7323
		L  R	自复/Momentary	双刀/DPDT	K16-7321

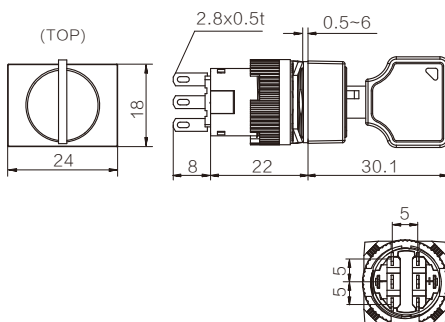
圆形钥匙钮



方形钥匙钮



长方形钥匙钮

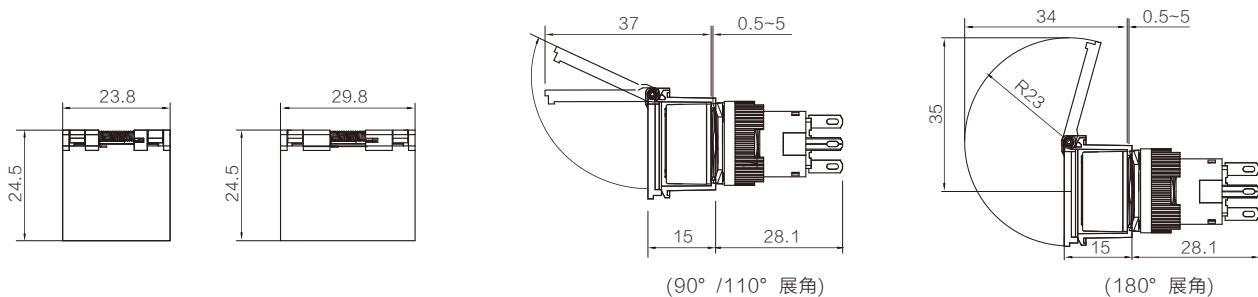


外观 Appearance	名称 Name	规格 Specifications	型号 Type	适用范围 Application								
	锁紧环扳手 Lock ring spanner	塑料 Plastic K16系列专用 Series special	JH16MGJ	将元器件安装到面板时，拧紧树脂环用工具。 请以0.88N.m以内的扭矩紧锁环。 The components will be mounted to the panel, tighten the resin ring use tools.								
	灯泡更换工具 Bulb replacing tool	塑料 Plastic K16系列专用 Series special	JH16DGJ	更换LED时的工具 Replacing the LED tool								
	按钮拆卸工具 Button removal tool		JH16CXGJ	拆卸灯罩和按钮用的工具 Replacing the LED tool								
	开关保护罩工具 Switch protective cover tools 保护罩(多芳基化树脂) 底座(聚缩醛) Protective cover (multiple arylation resin) Base(POM)	圆形/正方形用(90° 开闭自己保持型) Round/square with(90° Open/close keep type)	 JH162S2	防护等级/Protection grade: IP40 误动作防止用/Preveting errors with								
		长方形用(110° 开闭自己保持型) Rectangle(110° Open/close keep type)	 JH162S1	防护等级/Protection grade: IP40 误动作防止用/Preveting errors with								
		圆形/正方形用(180° 开闭弹簧复位型) Round/square with(180° Open/close spring return type)	 JH162F2	防护等级/Protection grade: IP40 误动作防止用/Preveting errors with 但仅限于IP67元器件组合时误动作防止用。 But IP40 only when combined with components malfunction prevention.								
		长方形用(180° 开闭弹簧复位型) Rectangle(180° Open/close spring return type)	 JH162F1	防护等级/Protection grade: IP40 误动作防止用/Preveting errors with 但仅限于IP67元器件组合时误动作防止用。 But IP40 only when combined with components malfunction prevention.								
		钥匙 Key	黄铜(镀镍) Brass(nickel)	JHK16K	厚度/Thickness t=2.0mm							
	LED	DC额定值/ DCRating 8mA	JHK16L	请用下列颜色编码替换型号中的"□" <table border="0"> <tr> <td>■ 红色/Red</td> <td>■ 蓝色/Blue</td> </tr> <tr> <td>■ 绿色/Green</td> <td>■ 橙色/Orange</td> </tr> <tr> <td>■ 黄色/Yellow</td> <td> 乳白色/Milky White</td> </tr> <tr> <td>■ 白色/White</td> <td></td> </tr> </table>	■ 红色/Red	■ 蓝色/Blue	■ 绿色/Green	■ 橙色/Orange	■ 黄色/Yellow	 乳白色/Milky White	■ 白色/White	
■ 红色/Red	■ 蓝色/Blue											
■ 绿色/Green	■ 橙色/Orange											
■ 黄色/Yellow	 乳白色/Milky White											
■ 白色/White												
	端子 Terminal	金属制(压铸) Metal(die casting) 锁紧环(树脂) The locking ring(resin)	JH16JXT									

外观 Appearance	名称 Name	规格 Specifications	型号 Type	适用范围 Application
	平面镶嵌框 Plane frame	圆形元器件用 Circular components 金属(铝色) Metal(aluminum color)	JH16-YJSXK	防护等级 / Protection grade: IP40 仅限于与IP65元器件组合使用时 only when used in combination with IP65 components
		圆形元器件用 Circular components 树脂(黑色) Resin(black)	JH16-SXK	防护等级 / Protection grade: IP40 仅限于与IP65元器件组合使用时 only when used in combination with IP65 components
		正方形元器件用 Square components 树脂(黑色) Resin(black)	JH16-FXK	防护等级 / Protection grade: IP40 仅限于与IP65元器件组合使用时 only when used in combination with IP65 components
		长方形元器件用 Rectangle components 树脂(黑色) Resin(black)	JH16-JXK	防护等级 / Protection grade: IP40 仅限于与IP65元器件组合使用时 only when used in combination with IP65 components
		圆形元器件用 Circular components (PA66)	JH16-FHXK	防护等级 / Protection grade: IP40 仅限于与IP65元器件组合使用时 only when used in combination with IP65 components
		正方形元器件用 Square components (PA66)		
	长方形元器件用 Rectangle components (PA66)	JH16-JHXK	适用于MP16系列长方形照明按钮开关及按钮开关。 选择开关、照明选择开关、摇杆开关等不能使用。 防护等级: IP40(仅限于IP40元器件组合使用) Applicable to MP16 series of Rectangle illuminated push button switch and button switch. Select switch, lighting switch, rocker switch can not be used. Protection grade: IP40(IP40 only components used in combination)	
	绝缘端子罩 Insulated terminal cover	F16使用 孔白色尼龙树脂制 Mili white nylon resin	JHFP	接线时, 先将导线插入绝缘端子罩的孔中后, 再焊接。 端子罩不标配。请另行订购 When wiring, the wire is inserted into the insulating terminal cover the hole, in welding. Terminal cover is not standard. Please order separately
	焊接脚保护套 The welding foot protective sleeve	K16使用 孔白色尼龙树脂制 Mili white nylon resin	JHKP	防护等级: IP65 锁紧扭矩: 0.1~0.29N.m Protection grade: IP65 A locking torque: 0.1~0.29N.m
	安装孔塞 Mount cover 橡胶塞 Rubber plug	丁腈橡胶制 (黑色) Nitrile rubber (black)	JH16KG	防护等级: IP40 Protection grade: IP40

外观 Appearance	名称 Name	规格 Specifications	型号 Type	适用范围 Application
	防水罩 Waterproof socket	圆形/Round	JHK16PR	适用于JHK16、JHF16按钮开关使用后防护等级可高到IP40(头部防浸水)。 Applicable for JHK16, JHF16 push-button switches, the protection class can reach IP40 after being used(the head resists the water)
		方形/Square	JHK16PS	
		长方形 Rectangle	JHK16PG	
	插座 Socket	焊接端子 Solder terminal	JH16S114	简单地插到元器件的后部即可。 Simply plug into the components of the rear
		PCB用端子 Terminal	JH16S113	
	Ø16mm 紧急遮断用开关保护罩 Big head emergency stop series	聚酰胺树脂(PA6) Polyamide resin (PA6)	K16-G1	防护等级:IP65 颜色:黄色 不能与标记牌同时使用。 Protection grade: IP65 Color: yellow It cannot be used together with the signboard.
	Ø16mm 紧急遮断用开关保护罩 Big head emergency stop series	聚酰胺树脂(PA6) Polyamide resin (PA6)	K16-G2	
	Ø16mm 紧急遮断用开关保护罩 Big head emergency stop series	聚酰胺树脂(PA6) Polyamide resin (PA6)	K16-G3	
	Ø22mm 紧急遮断用开关保护罩 Big head emergency stop series	聚酰胺树脂(PA6) Polyamide resin (PA6)	K16-G24Y	

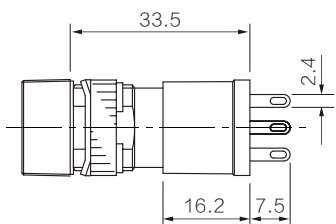
■ 护罩型平面镶嵌框, 5/8"(16mm)/ Switch guard 5/8"(16mm)



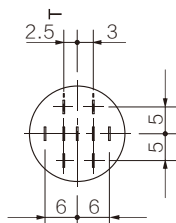
平面镶嵌框/ Plane frame

名称 Name	安装固定框 Fixed Frame	垫圈 Washer	镶嵌框 Frame	金属框 Metal Frame	塑料框 Plastic Frame
圆形 Round					
方形 Square					
长方形 Rectangle					

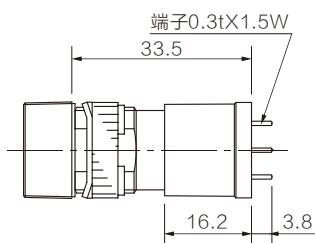
■ 插座/ Socket



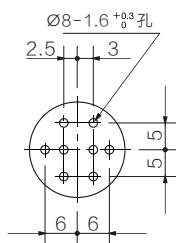
焊接端子型
Solder terminals



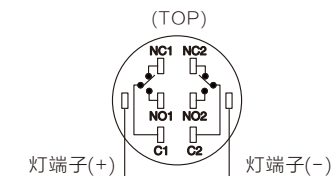
焊接图(底视图)
Welding map



PCB用端子型
Terminals



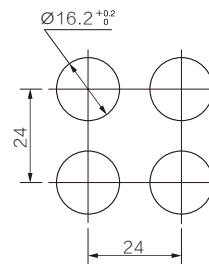
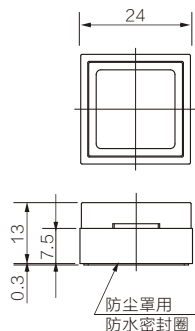
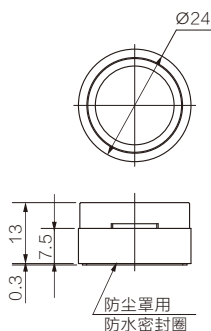
PCB加工图(底视图)
PCB Processing map



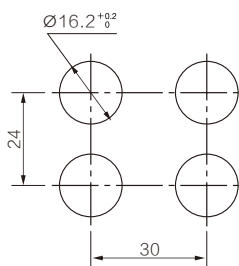
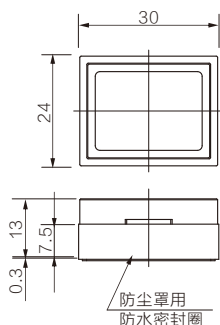
PC用端子型(底视图)
PC Terminals arrangement map

防尘罩/ Dust Proof Cover

■ 圆形/方形 Round/Square



■ 长方形 Rectangle



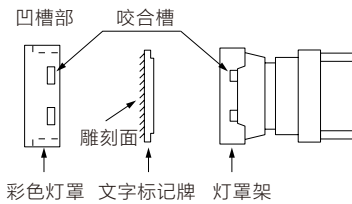
注意事项 / Matters needing attention

■ 钥匙选择开关注意事项

- 使用时，请注意以下事项，以免引起动作不良或故障。
- 请将钥匙确认的插入到主体钥匙孔底部。
- 在旋转操作时，请勿拔出钥匙。
- 波形槽型钥匙选择开关的钥匙号码除标准钥匙(OH)以外，另有6种。请务必使用号码与主体(号码刻印在钥匙插入部上)一致的钥匙。但，标准型无刻印。
- 波形槽型钥匙选择开关的钥匙根据号码有2种类型。标准钥匙(OH)、1H、2H为无插入方向限制的双方方向插入型。钥匙号码3H、4H、5H、6H在插入时有方向性，请注意。

■ 卸装灯罩及文字标记牌

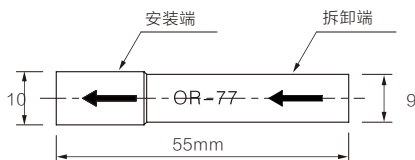
- 拆卸
用按钮拆卸工具(MT-101)夹住彩色灯罩的凹槽部，往前面拉出即可拆卸操作部(灯罩、文字标记牌、灯罩架)。从灯罩及灯罩架的咬合槽的内部向外推压，灯罩即可拆卸文字标记牌。文字标记牌的雕刻面有如下图所示的方向性。



- 安装
将文字标记牌插入灯罩架内，与灯罩及灯罩架的咬合槽对齐后压入即可。请注意文字标记牌的方向性。将文字标记牌、灯罩安装到灯罩架中后，在注意方向性的同时插入到主体中。
- 文字标记牌
K16系列照明按钮开关的文字显示可在内置的文字标记牌上雕刻
- 文字标记牌的尺寸(mm)

项目	圆形	正方形	长方形
文字标记牌尺寸及雕刻范围			
雕刻深度: 0.5mm以内 文字标记牌材料: 乳白色丙烯酸树脂			

- 拆卸: 请使用灯泡更换工具(OR-77)拆卸LED。请勿用钢丝钳。安装: 请使用灯泡更换工具(OR-77)进行安装。安装时请注意方向性。



■ 面板安装注意事项

- 向面板安装时，请使用锁紧环扳手。请勿使用扁嘴钳等进行锁紧、或过分拧紧以免造成锁紧环破损。请以0.88N.m以内的扭矩拧紧锁紧环。

■ 接线注意事项

- 请在60W/3秒(先端温度350℃)以内快速焊接端子。(使用非铅焊铁时推荐使用Sn-Ag-Cu型)焊接时，请将焊铁尽可能远离元器件主体的树脂部。接线时请勿故意弯曲端子或施加外力牵拉电线。(使用时请用户按实际使用条件进行确认。)
- 焊铁请使用非腐蚀性的松香液。
- 不能进行自动焊接。

■ 插座安装时的注意事项

- 安装插座时，请将元器件的TOP标志与插座的TOP标志对齐后插入

■ 选择开关保护罩

- 防水型(IP65)开关保护罩必须与防水型(IP65)开关配套使用。若与封闭型开关组合使用则不能保证其防水性能。

项目	开关保护罩		
	防水型(IP65)	IP65	封闭型(IP40)
开关保护罩	防水型(IP65)	IP65	IP40
	封闭型(IP40)	IP40	IP40

■ LED的使用电压注意事项

- 5V DC 的使用电压为完全直流时的值。

■ 保管以及使用上的注意事项

- 密集安装
请注意指示灯及照明按钮开关在密集安装，或连续亮灯时，会因发热而使周围的温度超过额定值的可能。在安装至非金属面板或在密封控制盘内使用时，请注意需进行通风换气或降低使用电压。
- 更换按钮或灯罩
请勿在元器件呈锁定的状态下更换交替型的按钮或灯罩，以免元器件的内部机构遭受损坏。请务必在锁定解除的状态下进行更换。
- 保管以及使用场所
请务必在规格指定的使用环境温度、湿度范围内保管以及使用。请勿在有油或水飞溅到场所使用封闭型开关，请使用防水型防油型(IP65)
- 触点(微动开关)
使用同一微动开关的NC(常闭)、NO(常开)触点时，请勿连接异电压或异种电源，以免引起完全短路。
- 使用IP65型时
IP65型是在不水溶性切削油中使用，确认到无油滴、油沫所引起的有害影响。特殊油环境可使用与否，请向金宏电器咨询。