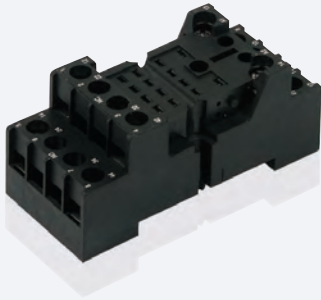




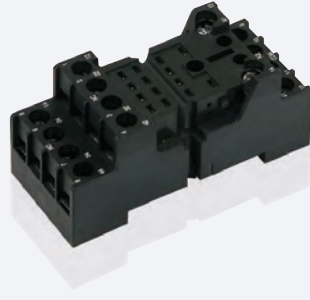
**18F继电器插座**  
18F Relay socket

18F-2Z-C8



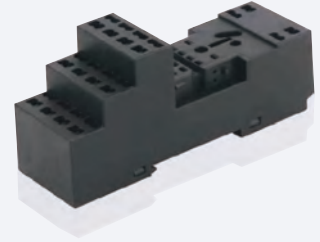
**18F继电器插座**  
18F Relay socket

18F-4Z-C8



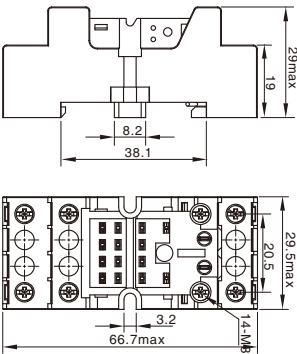
**18F继电器插座**  
18F Relay socket

18F-2Z-C9

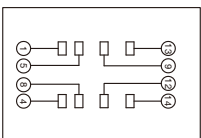


Specified load 额定负载	电 流 Current	12A
	电 压 Voltage	300V
Medium pressure 介质耐压		2000V
Wire strip Length 剥露导线长度		8mm
Wire cross section 适用导线截面积	单根导线 Single wire	2x2.5mm <sup>2</sup>
	套管导线 Casing wire	2x1.5mm <sup>2</sup>
Screw torque 螺钉扭矩		0.5Nm
Ambient temperature range 环境温度		-25°C~+85°C

外形尺寸图 Dimensions

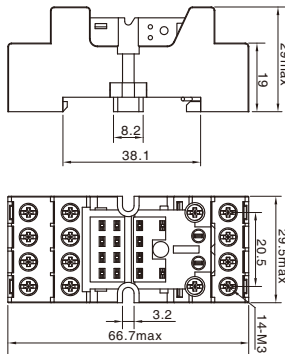


接线图 Wiring Diagram

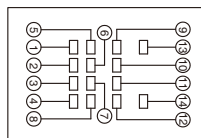


Specified load 额定负载	电 流 Current	10A
	电 压 Voltage	300V
Medium pressure 介质耐压		2000V
Wire strip Length 剥露导线长度		8mm
Wire cross section 适用导线截面积	单根导线 Single wire	2x2.5mm <sup>2</sup>
	套管导线 Casing wire	2x1.5mm <sup>2</sup>
Screw torque 螺钉扭矩		0.5Nm
Ambient temperature range 环境温度		-25°C~+85°C

外形尺寸图 Dimensions

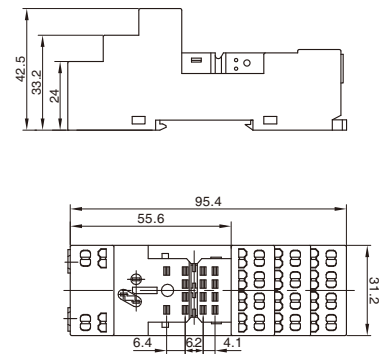


接线图 Wiring Diagram



Specified load 额定负载	电 流 Current	12A
	电 压 Voltage	300V
Medium pressure 介质耐压		2500V
Wire strip Length 剥露导线长度		8mm
Wire cross section 适用导线截面积	实芯线 Solid wire	2x1.5mm <sup>2</sup>
	绞 线 Stranded wire	2x1.5mm <sup>2</sup>
Screw torque 螺钉扭矩		-
Ambient temperature range 环境温度		-25°C~+85°C

外形尺寸图 Dimensions



接线图 Wiring Diagram

