

# SD30 Series

Pushbutton Switches

名称外观 Appearance	产品型号 Model	触点形式 Contact Type	操作类别 Operation Type	颜色 Color	额定电压 Rated Voltage
-----------------	------------	-------------------	---------------------	----------	--------------------

## 平面按钮(短触点) Flush Pushbuttons (Short Contact)



SD30-2110F	1NO
SD30-2101F	1NC
SD30-2120F	2NO
SD30-2102F	2NC
SD30-2111F	1NO+1NC
SD30-3110F	1NO
SD30-3101F	1NC
SD30-3120F	2NO
SD30-3102F	2NC
SD30-3111F	1NO+1NC

自复 Momentary

K	黑色	Black
G	绿色	Green
R	红色	Red
B	蓝色	Blue
W	白色	White
Y	黄色	Yellow

自锁 Maintained

## 带灯平面按钮(短触点) Illuminated Flush Pushbuttons (Short Contact)



SD30-2710F	1NO
SD30-2701F	1NC
SD30-2720F	2NO
SD30-2702F	2NC
SD30-2711F	1NO+1NC
SD30-3710F	1NO
SD30-3701F	1NC
SD30-3720F	2NO
SD30-3702F	2NC
SD30-3711F	1NO+1NC

自复 Momentary

G	绿色	Green	D	24VDC
R	红色	Red	E	12VDC
B	蓝色	Blue	F	6.3VDC
W	白色	White	A1	110VAC
Y	黄色	Yellow	A2	220VAC

自锁 Maintained

## 圆形实面按钮(短触点) Flat Round Pushbuttons (Short Contact)



SD30-21S10F	1NO
SD30-21S01F	1NC
SD30-21S20F	2NO
SD30-21S02F	2NC
SD30-21S11F	1NO+1NC
SD30-31S10F	1NO
SD30-31S01F	1NC
SD30-31S20F	2NO
SD30-31S02F	2NC
SD30-31S11F	1NO+1NC

自复 Momentary

自锁 Maintained

## 带灯圆形实面按钮(短触点) Illuminated Flat Round Pushbuttons (Short Contact)



SD30-27S10F	1NO
SD30-27S01F	1NC
SD30-27S20F	2NO
SD30-27S02F	2NC
SD30-27S11F	1NO+1NC
SD30-37S10F	1NO
SD30-37S01F	1NC
SD30-37S20F	2NO
SD30-37S02F	2NC
SD30-37S11F	1NO+1NC

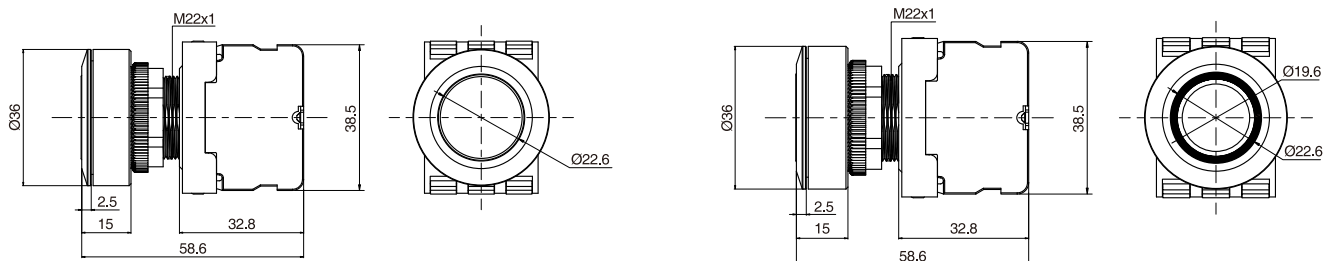
自复 Momentary

G	绿色	Green	D	24VDC
R	红色	Red	E	12VDC
B	蓝色	Blue	F	6.3VDC
W	白色	White	A1	110VAC
Y	黄色	Yellow	A2	220VAC

自锁 Maintained

## 外形尺寸 Dimensions

(单位unit: mm)



短款触点按钮 Short Contact Pushbuttons