



JHFB-100 熔断器底座 FUSE BASE

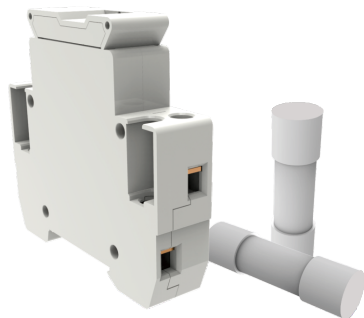
Fuse base effect

Protect electrical appliances, mainly used for short circuit protection.

Annotate

1. company name
2. warning
3. Specifications
4. Core parameters
5. product name
6. Schematic diagram

JHFB-100 熔断器底座 FUSE BASE

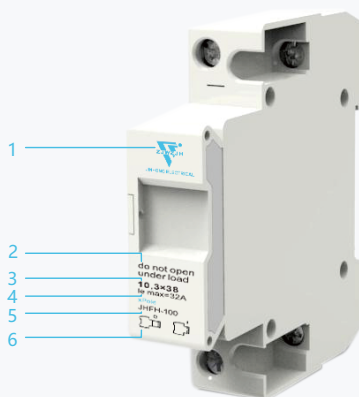


Application

PV DC BR-30 Fuse Holder was designed and manufactured, complying with the standard IEC60947-3 The Rated Current up to 30A, rated voltage up to 1000V DC. It applied for PV DC combiner box, inverter etc, with the main function of over-current protection and effective disconnection

PV DC BR-30保险丝座是根据标准IEC60947-3设计和制造的。额定电流高达30A，额定电压高达1000V DC。适用于光伏直流汇流箱，逆变器等，具有过流保护和有效断开的主要功能

Appearance Introduction

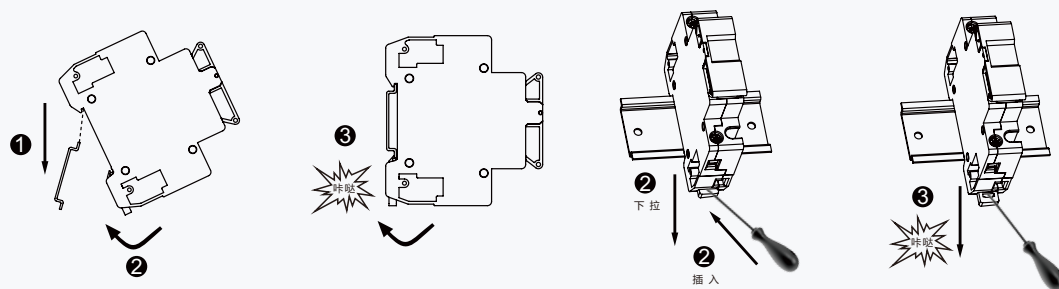


Parameter

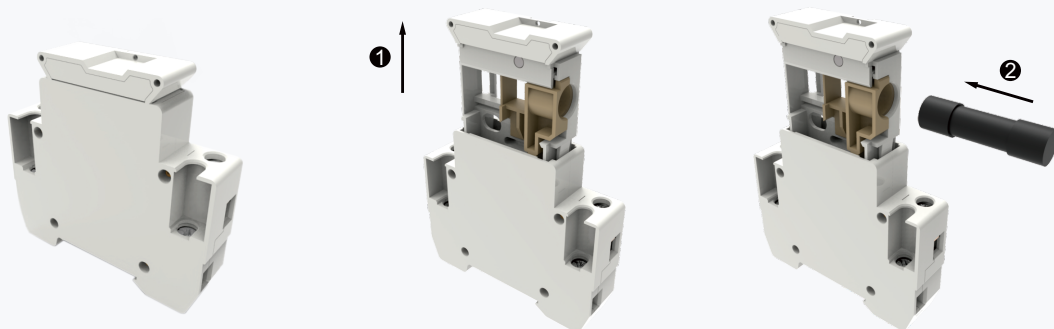
PV DC BR-30 Fuse HolderPole	1P
According to	IEC60947-3
Electrical Characteristics	
Rated Working Voltage	1000V DC
Rated Current	30A
Breaking Capacity	20KA
Max Power Dissipation	3W
Control and Indication	
Operating State/Fault Indication	Indicator Light OFF/Indicator Light ON
Connection and InstallationWire	2.5mm ² - 6mm ²
Terminal Screws	M3.5
Torque	2.5
Degree of Protection	IP20
Installation Environment	
Fuse Size	10x38mm
Operating Temperature Range	-30°C~+70°C
For Mounting On	TH35-7.5/DIN353
Pollution Degree	+20°C≤95%,+40°C≤50%
Relative HumidityWeight	0.07kg Per pole
Installation Class	III

JHFH-100 熔断器底座 FUSE BASE

Installation



Replacement Fuse



Replacement Fuse

