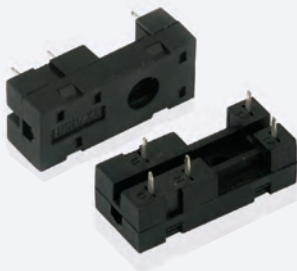




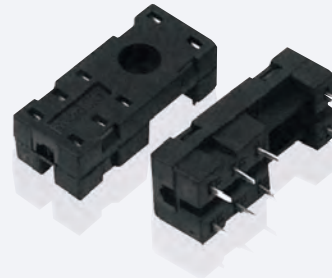
14F继电器插座
 14F Relay socket

14F-1Z-A1



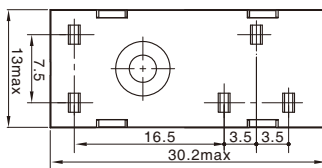
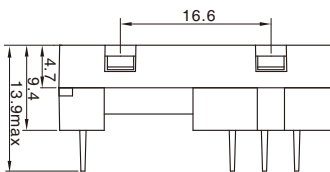
14F继电器插座
 14F Relay socket

14F-2Z-A1



Specified load 额定负载	电 流 Current	10A
	电 压 Voltage	300V
Medium pressure 介质耐压		2500V
Wire strip Length 剥露导线长度		-
Wire cross section 适用导线截面积	单根导线 Single wire	-
	套管导线 Casing wire	-
Screw torque 螺钉扭矩		-
Ambient temperature range 环境温度		-25°C~+85°C

外形尺寸图 Dimensions



Specified load 额定负载	电 流 Current	10A
	电 压 Voltage	300V
Medium pressure 介质耐压		2500V
Wire strip Length 剥露导线长度		-
Wire cross section 适用导线截面积	单根导线 Single wire	-
	套管导线 Casing wire	-
Screw torque 螺钉扭矩		-
Ambient temperature range 环境温度		-25°C~+85°C

外形尺寸图 Dimensions

