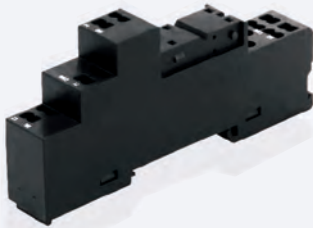




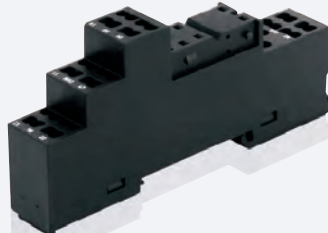
14F继电器插座
14F Relay socket

14F-1Z-C5



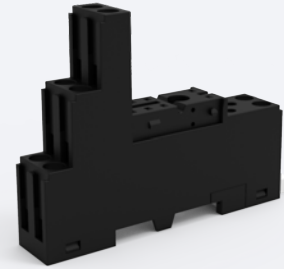
14F继电器插座
14F Relay socket

14F-2Z-C5



14F继电器插座
14F Relay socket

14F-2Z-C7

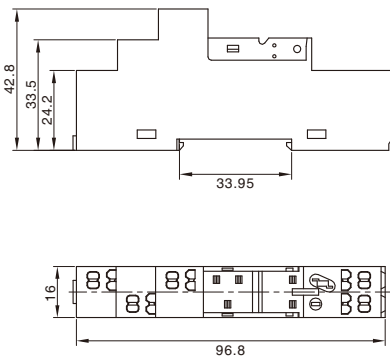


Specified load 额定负载	电 流 Current	12A
	电 压 Voltage	300V
Medium pressure 介质耐压		4000V
Wire strip Length 剥露导线长度		8mm
Wire cross section 适用导线截面积	单根导线 Single wire	2x1.5mm ²
	套管导线 Casing wire	2x1.5mm ²
Screw torque 螺钉扭矩		0.5Nm
Ambient temperature range 环境温度		-25°C~+85°C

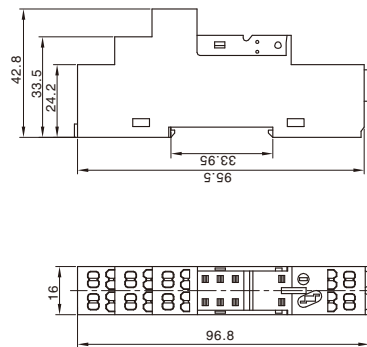
Specified load 额定负载	电 流 Current	12A
	电 压 Voltage	300V
Medium pressure 介质耐压		4000V
Wire strip Length 剥露导线长度		8mm
Wire cross section 适用导线截面积	单根导线 Single wire	2x1.5mm ²
	套管导线 Casing wire	2x1.5mm ²
Screw torque 螺钉扭矩		0.5Nm
Ambient temperature range 环境温度		-25°C~+85°C

Specified load 额定负载	电 流 Current	10A
	电 压 Voltage	300V
Medium pressure 介质耐压		4000V
Wire strip Length 剥露导线长度		8mm
Wire cross section 适用导线截面积	单根导线 Single wire	2x2.5mm ²
	套管导线 Casing wire	2x1.5mm ²
Screw torque 螺钉扭矩		0.5Nm
Ambient temperature range 环境温度		-25°C~+85°C

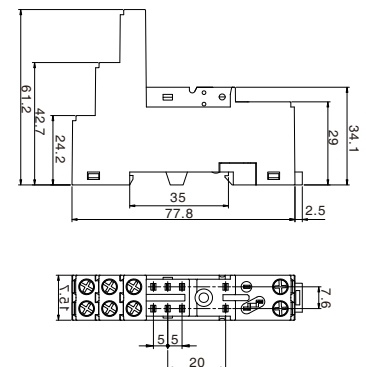
外形尺寸图 Dimensions



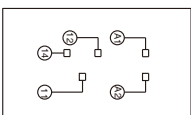
外形尺寸图 Dimensions



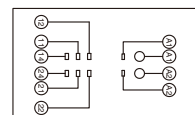
外形尺寸图 Dimensions



接线图 Wiring Diagram



接线图 Wiring Diagram



接线图 Wiring Diagram

