


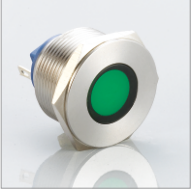




金属信号灯

Metal indicator lamp

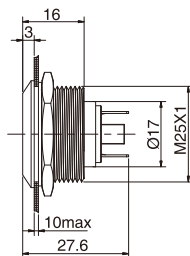
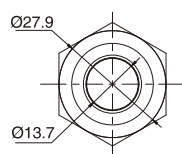
J25 金属信号灯

J25 Metal indicator lamp

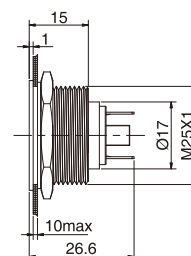
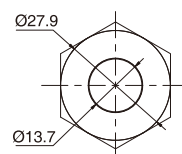
外观 Appearance	头部形状 Shape of top	安装方式 Install Style	产品型号 Model	灯珠颜色 Color	灯珠电压 Voltage	外壳材料 Crust material
	凹面圆形 Concove round	焊线型 PCB Type	J25-150P □ ●	请用下列编码替换 型号中的“□” ■ 红色/Red ■ 绿色/Green ■ 蓝色/Blue ■ 白色/White ■ 黄色/Yellow	请用下列编码替换 型号中的“●” D: 24VDC E: 12VDC F: 6.3VDC A1: 110VAC A2: 220VAC	Nil: 不锈钢 T: 铜镀镍 G: 铜镀铬 Nil: Stainless steel T: Copper Plated Ni G: Copper plated Cr
	实面圆形 Flat round	焊线型 PCB Type	J25-170P □ ●			
	凹面圆形 Concove round	螺丝型 Screw Type	J25-150A □ ●			
	实面圆形 Flat round	螺丝型 Screw Type	J25-170A □ ●			

外形尺寸图 Dimensions

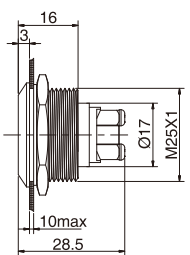
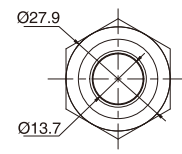
凹面信号灯焊线型



平面信号灯焊线型



凹面信号灯螺丝型



平面信号灯螺丝型

