


 采用环保纸印刷

 本手册属温州金宏电器有限公司印制，仅用于说明本系列产品的相关信息。金宏电器可能因技术升级或采用更新的生产工艺而改进本手册有关内容，或对本手册的印刷错误及不准确的信息进行必要的改进和更改，恕不另行通知。商家订货时请联系公司，以证实相关信息。



温州金宏电器有限公司
WENZHOU JINHONG ELECTRICAL APPLIANCE CO., LTD

浙江省乐清市城东产业功能区永兴二路10号
Yongxing second Road 10#, Chengdong industrial
functional area, Yueqing city, Zhejiang Province.

T +86-577-57187518
F +86-577-57187788

H www.wzjh.cc
E admin@wzjh.cc

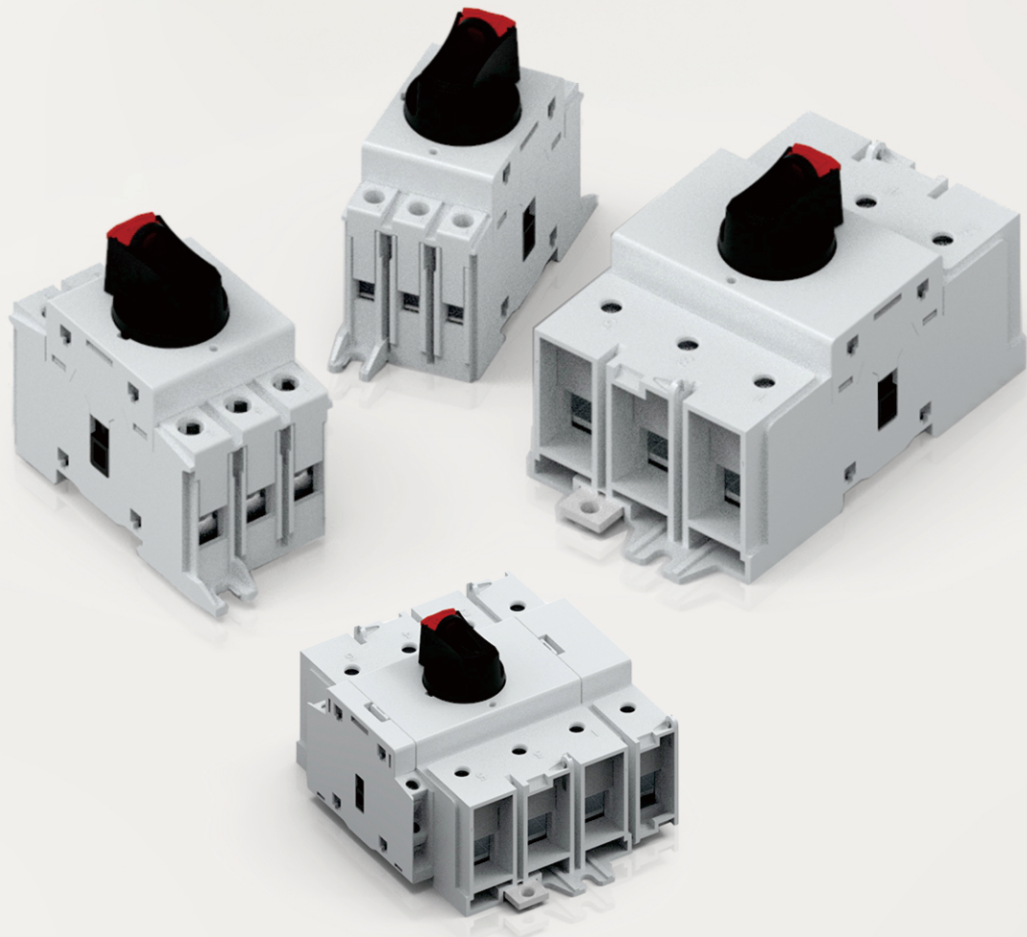


微信公众号

Isolation Switch Disconnecter

隔离开关

version 2020



SWITCH DISCONNECTORS

隔离开关



Switch-Disconnectors

隔离开关

JHAS Switch-disconnectors are widely used in Power Distribution systems and Automation systems for Buildings, Power, Petrochemical and other industries, can effectively solve the problems of emergency disconnection, safety disconnection, machine control and motor control.

.With integrated isolation, breaking and switching function, the high performance design means these products can be easily changed from Load Isolation Switches to Cam Switches and provide highly innovative solutions for many applications.

. With the instantaneous on/off structure, contact force is not affected by external forces, the contact pressure and the over travel remain stable during the operation of the handle to the action point.

.The switch housing is made of glass fibre reinforced unsaturated polyester resin and has high Flame Resistance, Dielectric, Anti-Carbonisation and Impact Resistance.

.A standard 3 pole Switch-disconnectors can be combined into a 6/8 pole Switch-disconnectors by the use of accessories.

.Installation Options: Screw Installation, Rail Installation or Door Installation.

.Can padlock, more safety and reliable, diameter of lock is $\phi 4 - \phi 5\text{mm}$.

Standard: EN60947-3 and GB14048.3.

. Degree of Protection: IP20 or IP67 (with Plastic or Aluminium enclosures).

JHAS 隔离开关广泛用于建筑、电力、石油化工及其他行业的配电系统和自动化系统,能有效的解决紧急断开、安全断开和机器控制,电动机控制等问题。

·集成隔离、分断和开关功能,精巧的设计使该系列产品能轻易的由隔离开关转变成转换开关,为许多应用场合提供创新性的解决方案。

·具有瞬时通断结构,即触头压力不受外界驱动速度的影响,手柄转到动作点之前的整个过程中,触头压力与超程保持稳定。

·由玻璃纤维增强不饱和聚脂树脂制造的外壳具有良好的阻燃性能、介电性能、抗碳化性。

·一个标准的3极隔离开关,通过使用附件,能组合成6/8极隔离开关。

·安装方式:螺钉安装,导轨安装,门安装。

·可加挂锁,更安全可靠(挂锁直径 $\phi 4 - \phi 5\text{mm}$)

·执行标准:EN60947-3,GB14048.3

·防护等级:IP20 or IP67 (带塑料盒或铝盒)

Type and meaning

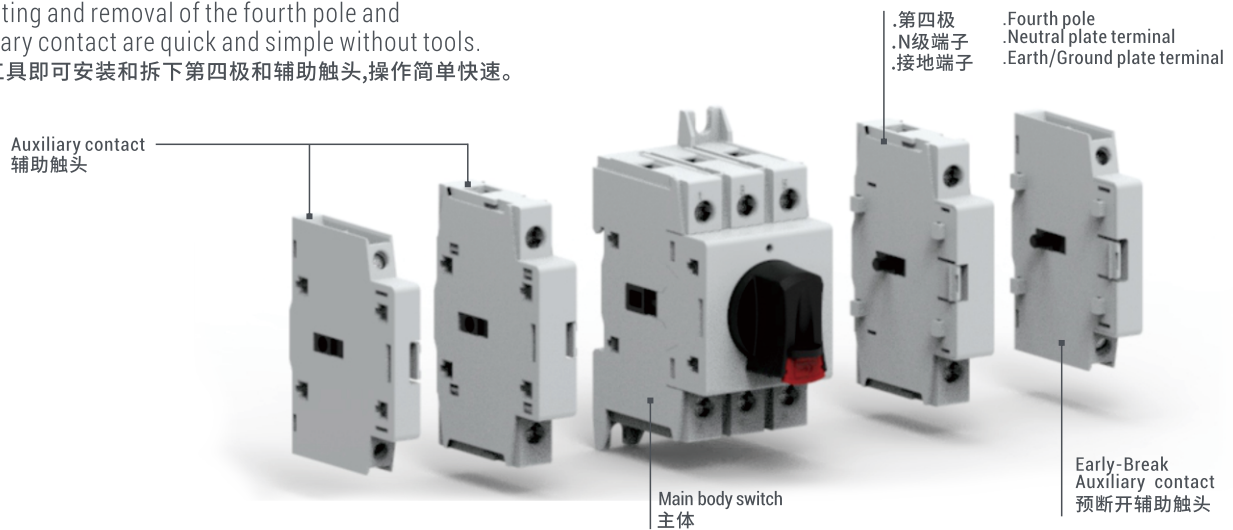
型号及含义

JHAS-3 125 PM RY 64		
JHAS	Type of Switch-disconnectors	隔离开关型号
3	Poles: 3:3P, 4:4P	极数: 3:3P, 4:4P
125	Rated current(A): 16, 20, 25, 32, 40, 63, 80, 100, 125A	额定电流(A): 16, 20, 25, 32, 40, 63, 80, 100, 125A
PM	Installation Form: PM: Panel mounting (Door installation method) DC: Door lock installation (Frontal operation outside the cabinet) EL: External box installation Empty: Direct operation mode	安装形式: PM: 面板安装 (门安装方式) DC: 门锁安装 (柜外正面操作方式) EL: 外置盒安装 Empty: 直接操作方式
RY	Handle Options: B: Rotating black handle RY: Rotating red/yellow handle	手柄: B: 黑色旋转手柄 RY: 红/黄旋转手柄
64	Rubber mat: 64: have Empty: Nothing	橡胶垫: 64: 有 空: 无

Accessory

附件

Mounting and removal of the fourth pole and auxiliary contact are quick and simple without tools. 无需工具即可安装和拆下第四极和辅助触头, 操作简单快速。



Add-on Auxiliary Contacts:

One only add-on block suitable for all the JHAS switch disconnectors, having simultaneous operation with the switch poles. Versions available with an early-break NO contact.

附加辅助触头

JHAS系列隔离开关采用同一种辅助触头, 辅助触头与开关主极同时动作, 根据需要可提供一个具有预断开功能的常开触头。

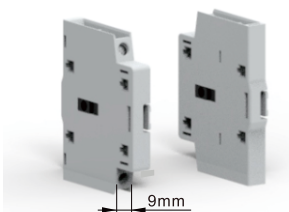


Side Mount Add-on Fourth Pole

Side Mount Add-on Fourth Pole: Simultaneous or early contact operation of the fourth pole with respect to the switch disconnector poles.

用于侧面安装附加第四极

第四极同时或提前于开关主极闭合。



Maximum Combinations:

Mounting up to 4 auxiliary contacts or 1 fourth pole and 3 auxiliary contacts (2 blocks always on the right and 2 on the left side) of each switch disconnector.

最多组合

每个隔离开关最多可安装四个辅助附件 (2个在右, 2个在左)



6 and 8 Pole

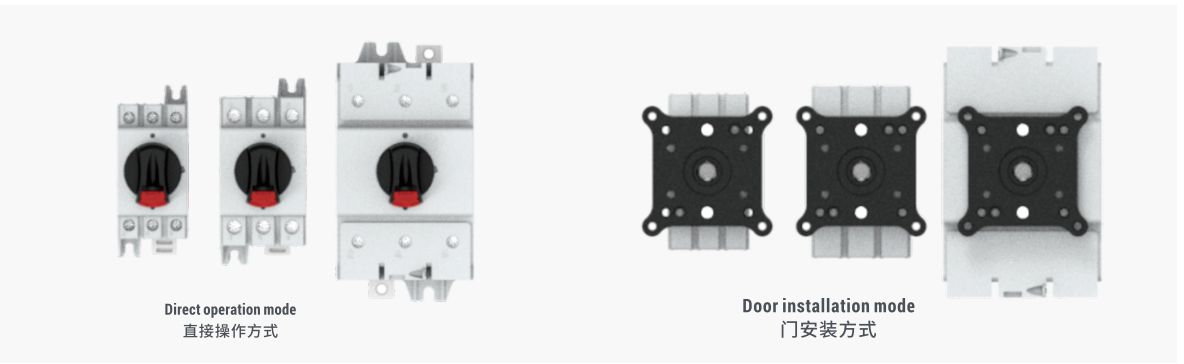
A mechanical combination system is available for the 16A to 63A switch disconnectors with direct operating handle to provide 6/8 pole disconnectors, along with a mechanical interlock mechanism for the line changeover function.

6极和8极

通过机械组合系统可实现6/8极隔离开关功能, 通过机械互锁机构可实现转换开关功能。

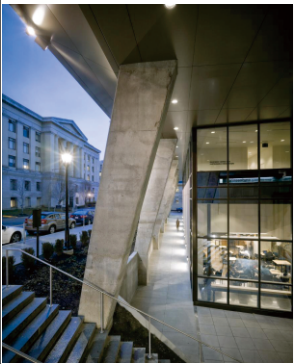
Switch-Disconnectors

隔离开关



Width 宽度	36mm				52.5mm		71.4mm		36mm				52.5mm		71.4mm		
Current 电流	16A	25A	32A	40A	63A	80A	100A	125A	16A	25A	32A	40A	63A	80A	100A	125A	
Type 型号	3P	JHAS-316	JHAS-325	JHAS-332	JHAS-340	JHAS-363	JHAS-380	JHAS-3100	JHAS-3125	JHAS-316PM	JHAS-325PM	JHAS-332PM	JHAS-340PM	JHAS-363PM	JHAS-380PM	JHAS-3100PM	JHAS-3125PM
	4P	JHAS-416	JHAS-425	JHAS-432	JHAS-440	JHAS-463	JHAS-480	JHAS-4100	JHAS-4125	JHAS-416PM	JHAS-425PM	JHAS-432PM	JHAS-440PM	JHAS-463PM	JHAS-480PM	JHAS-4100PM	JHAS-4125PM
IEC conventional free air thermal current Ith 发热电流 (≤40°C) (≤690V)	16A	25A	32A	40A	63A	80A	100A	125A	16A	25A	32A	40A	63A	80A	100A	125A	
IEC rated operational current Ie 额定工作电流 AC-21A/B (≤690V)	16A	25A	32A	40A	63A	80A	100A	125A	16A	25A	32A	40A	63A	80A	100A	125A	
IEC rated operational current Ie 额定工作电流 AC-22A/B	415V	16A	25A	32A	40A	63A	80A	100A	125A	16A	25A	32A	40A	63A	80A	100A	125A
	500V	16A	20A	25A	32A	63A	63A	80A	100A	16A	20A	25A	32A	63A	63A	80A	100A
	690V	16A	20A	25A	25A	40A	40A	63A	63A	16A	20A	25A	25A	40A	40A	63A	63A
IEC rated operational current Ie 额定工作电流 AC-23A/B	415V	16A	25A	32A	40A	63A	80A	100A	125A	16A	25A	32A	40A	63A	80A	100A	125A
	500V	16A	20A	25A	32A	63A	63A	80A	100A	16A	20A	25A	32A	63A	63A	80A	100A
	690V	16A	20A	25A	25A	40A	40A	63A	63A	16A	20A	25A	25A	40A	40A	63A	63A
IEC rated operational power (3 phase) 额定工作功率 (三相) AC-23A/B	415V	7.5KW	11KW	15KW	18.5KW	30KW	37KW	45KW	55KW	7.5KW	11KW	15KW	18.5KW	30KW	37KW	45KW	55KW
	500V	7.5KW	11KW	15KW	18.5KW	30KW	37KW	45KW	55KW	7.5KW	11KW	15KW	18.5KW	30KW	37KW	45KW	55KW
	690V	7.5KW	15KW	15KW	15KW	30KW	37KW	45KW	55KW	7.5KW	15KW	15KW	15KW	30KW	37KW	45KW	55KW
Fuse class 保险丝规格	415V	16A	25A	32A	40A	63A	80A	100A	125A	16A	25A	32A	40A	63A	80A	100A	125A
Rated conditional short-circuit current 额定限制短路电流	415V	10KA				15KA		20KA		10KA				15KA		20KA	
Rated short-time withstand current 1S 额定短时耐受电流	690V	1000A				1500A		2500A		1000A				1500A		2500A	
Rated short-circuit making capacity 额定短路接通能力	690V	800A				1400A		2100A		800A				1400A		2100A	
Cross area of terminals 端子的接线截面积		0.75~10mm ²				1.5~35mm ²		10~70mm ²		0.75~10mm ²				1.5~35mm ²		10~70mm ²	
Rated insulation voltage Ui 额定绝缘电压		800V															
Rated impuls withstand voltage Uimp 额定冲击耐受电压		8KV															
Mechanical Endurance 机械寿命		40000															
Electrical Endurance 电气寿命		20000															
Ambient Temperature 环境温度		Operating 操作 -25...+55°C						Storage 存储 -40...+70°C									
Maximum altitude 最高海拔		3000m															
Fixing 固定		By screw or on 35mm Din rail (IEC/EN 60715) 螺钉或35mm标准导轨															

Notes: △The Product is under development 注: △ 该产品正在开发中



Switch-disconnectors in Plastic Enclosures
塑料盒隔离开关



Switch-disconnectors in Aluminium Enclosures
铝盒隔离开关

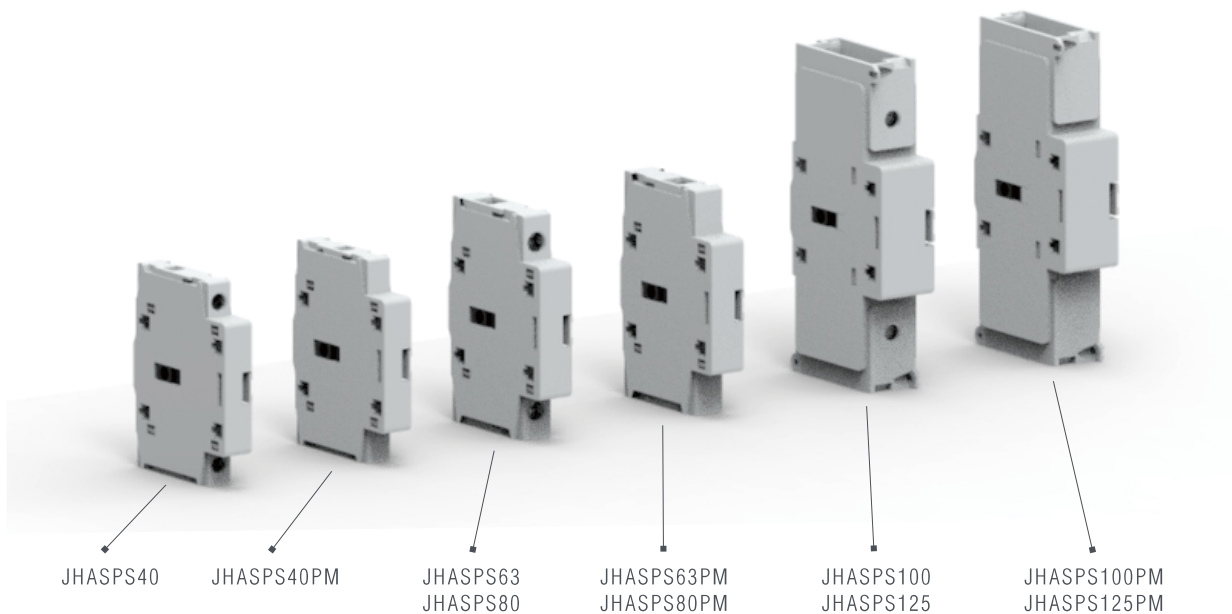
Width 宽度	105mm						135mm		205mm		105mm				135mm		205mm	
Current 电流	16A	25A	32A	40A	63A	80A	100A	125A	16A	25A	32A	40A	63A	80A	100A	125A		
Type 型号	3P	JHAS-316EP	JHAS-325EP	JHAS-332EP	JHAS-340EP	JHAS-363EP	JHAS-380EP	JHAS-3100EP	JHAS-3125EP	JHAS-316EM	JHAS-325EP	JHAS-332EM	JHAS-340EM	JHAS-363EM	JHAS-380EM	JHAS-3100EM	JHAS-3125EM	
	4P	JHAS-416EP	JHAS-425EP	JHAS-432EP	JHAS-440EP	JHAS-463EP	JHAS-480EP	JHAS-4100EP	JHAS-4125EP	JHAS-416EM	JHAS-425EP	JHAS-432EM	JHAS-440EM	JHAS-463EM	JHAS-480EM	JHAS-4100EM	JHAS-4125EM	
IEC conventional free air thermal current I _{th} 发热电流 (≤40°C) (≤690V)	16A	25A	32A	40A	63A	80A	100A	125A	16A	25A	32A	40A	63A	80A	100A	125A		
IEC rated operational current I _e 额定工作电流 AC-21A/B (≤690V)	16A	25A	32A	40A	63A	80A	100A	125A	16A	25A	32A	40A	63A	80A	100A	125A		
IEC rated operational current I _e 额定工作电流 AC-22A/B	415V	16A	25A	32A	40A	63A	80A	100A	125A	16A	25A	32A	40A	63A	80A	100A	125A	
	500V	16A	20A	25A	32A	63A	63A	80A	100A	16A	20A	25A	32A	63A	63A	80A	100A	
	690V	16A	20A	25A	25A	40A	40A	63A	63A	16A	20A	25A	25A	40A	40A	63A	63A	
IEC rated operational current I _e 额定工作电流 AC-23A/B	415V	16A	25A	32A	40A	63A	80A	100A	125A	16A	25A	32A	40A	63A	80A	100A	125A	
	500V	16A	20A	25A	32A	63A	63A	80A	100A	16A	20A	25A	32A	63A	63A	80A	100A	
	690V	16A	20A	25A	25A	40A	40A	63A	63A	16A	20A	25A	25A	40A	40A	63A	63A	
IEC rated operational power (3 phase) 额定工作功率 (三相) AC-23A/B	415V	7.5KW	11KW	15KW	18.5KW	30KW	37KW	45KW	55KW	7.5KW	11KW	15KW	18.5KW	30KW	37KW	45KW	55KW	
	500V	7.5KW	11KW	15KW	18.5KW	30KW	37KW	45KW	55KW	7.5KW	11KW	15KW	18.5KW	30KW	37KW	45KW	55KW	
	690V	7.5KW	15KW	15KW	15KW	30KW	37KW	45KW	55KW	7.5KW	15KW	15KW	15KW	30KW	37KW	45KW	55KW	
Fuse class 保险丝规格	415V	16A	25A	32A	40A	63A	80A	100A	125A	16A	25A	32A	40A	63A	80A	100A	125A	
Rated conditional short-circuit current 额定限制短路电流	415V	10KA			15KA		20KA		10KA				15KA		20KA			
Rated short-time withstand current 1S 额定短时耐受电流	690V	1000A			1500A		2500A		1000A				1500A		2500A			
Rated short-circuit making capacity 额定短路接通能力	690V	800A			1400A		2100A		800A				1400A		2100A			
Cross area of terminals 端子的接线截面积		0.75~10mm ²			1.5~35mm ²		10~70mm ²		0.75~10mm ²				1.5~35mm ²		10~70mm ²			
Rated insulation voltage U _i 额定绝缘电压		800V																
Rated impuls withstand voltage U _{imp} 额定冲击耐受电压		8KV																
Mechanical Endurance 机械寿命		40000																
Electrical Endurance 电气寿命		20000																
Ambient Temperature 环境温度		Operating 操作 -25...+55°C Storage 存储 -40...+70°C																
Maximum altitude 最高海拔		3000m																
Fixing 固定		By screw 螺钉																

Switch-Disconnectors

隔离开关

Side mount add-on poles

侧面安装附加极



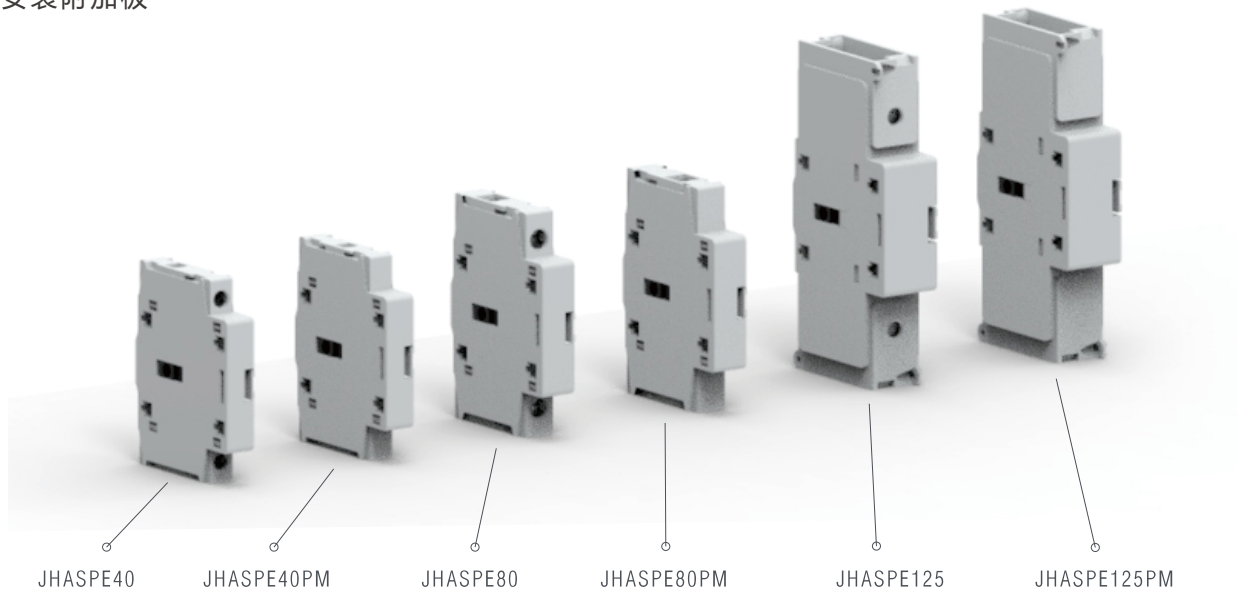
Fourth pole, simultaneous closing operation as switch poles

第四极, 同步闭合的分断开关主极

Type 型号	IEC conventional free air thermal current Ith AC21A(≤690V) 热电流	IEC rated operational current Ie AC22A(≤690V) AC23A(≤415V) 额定工作电流	Width 宽度	Applied to 适用于	Function 功能
JHASPS40	40A	40A	12mm	JHAS-316~JHAS-340	
JHASPS63	63A	63A	17.5mm	JHAS-363	
JHASPS80	80A	80A	17.5mm	JHAS-380	
JHASPS100	100A	100A	23.8mm	JHAS-3100	
JHASPS125	125A	125A	23.8mm	JHAS-3125	
JHASPS40PM	40A	40A	12mm	JHAS-316PM~JHAS-340PM	
JHASPS63PM	63A	63A	17.5mm	JHAS-363PM	
JHASPS80PM	80A	80A	17.5mm	JHAS-380PM	
JHASPS100PM	100A	100A	23.8mm	JHAS-3100PM	
JHASPS125PM	125A	125A	23.8mm	JHAS-3125PM	

Side mount add-on poles

侧面安装附加极



Fourth pole, early-make closing operation with respect to switch poles

第四极, 提前闭合的分断开关主极

Type 型号	IEC conventional free air thermal current I _{th} AC21A(≤690V) 热电流	IEC rated operational current I _e AC22A(≤690V) AC23A(≤415V) 额定工作电流	Width 宽度	Applied to 适用于	Function 功能
JHASPE40	40A	40A	12mm	JHAS-316~JHAS-340	
JHASPE80	80A	80A	17.5mm	JHAS-363, JHAS-380	
JHASPE125	125A	125A	23.5mm	JHAS-3100, JHAS-3125	
JHASPE40PM	40A	40A	12mm	JHAS-316PM~JHAS-340PM	
JHASPE80PM	80A	80A	17.5mm	JHAS-363PM, JHAS-380PM	
JHASPE125PM	125A	125A	23.5mm	JHAS-3100PM~JHAS-3125PM	